



ELECTRA PALACE

• THESSALONIKI •

ELECTRA PALACE HOTEL



Welcome to Electra Palace Thessaloniki

Experience Luxury in Thessaloniki

Electra Palace Thessaloniki is a hotel as legendary as its celebrated location. It stands on the impressive Aristotelous Square overlooking the sea and has been one of the city's most well recognized landmarks ever since its opening five decades ago. With international celebrities on the daily guest list, the hotel quickly became part of the city's inner scene.

Today Electra Palace reopens its gates following a complete makeover. Now it offers not just the opportunity to stay at the heart of the city, but also to enjoy a wide array of top-class amenities and sophisticated aesthetics, while experiencing the grandeur of an architectural masterpiece.







Electra Palace Thessaloniki

EXPLORE THE HOTEL

- [Orizontes Roof Garden](#)
- [Wellness & Fitness](#)
- [Rooms & Amenities](#)
- [Explore Near Area](#)
- [Meetings & Events](#)

ORIZONTES
• ROOF GARDEN •





ORIZONTES

• ROOF GARDEN •

Dining with Majestic View

A pretty high wow factor awaits our visitors at the 7th floor of the hotel, in the form of the Orizontes Roof Garden Restaurant and Bar.

Fully renovated in minimalistic monochrome and with chic aesthetic details, it boasts an enviable view of the Thermaikos Gulf and the iconic landmark of Aristotelous Square, as well as the legendary Olympus Mountain, the house of ancient Greek Gods.

This all-day prime venue offers the famous Electra hotels signature “breakfast with a view”, trendy lunches, inventive drink-accompanying small dishes, as well as sophisticated suppers, all with intense Mediterranean influences in a menu that pays tribute to the unique gastronomic character of Thessaloniki.

An endless list of cocktails to be enjoyed by the rooftop edge and the fixed presence of the city’s A-listers simply add the finishing touches to the hotel’s renewed cosmopolitan credentials.



ORIZONTES
• ROOF GARDEN •



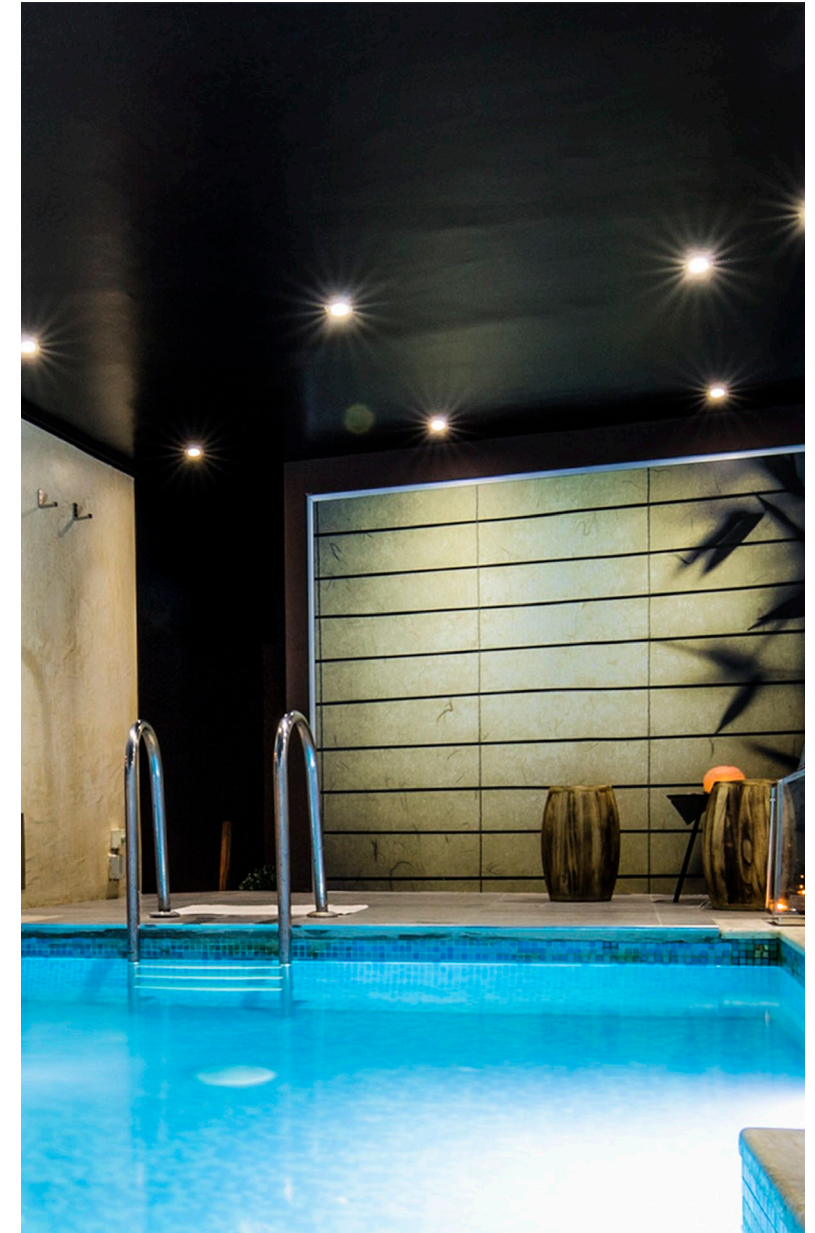
Wellness & Fitness





Spa & Fitness

Featuring an indoor heated pool, a guests' fitness center, steam bath, a sauna and a Jacuzzi, the wellness centre at our Thessaloniki hotel is ideal for unwinding after a busy day, or energizing yourself in preparation for one. Here you will also find experienced therapists that can offer you soothing and rejuvenating services, such as massages, reflexology treatments and facials.

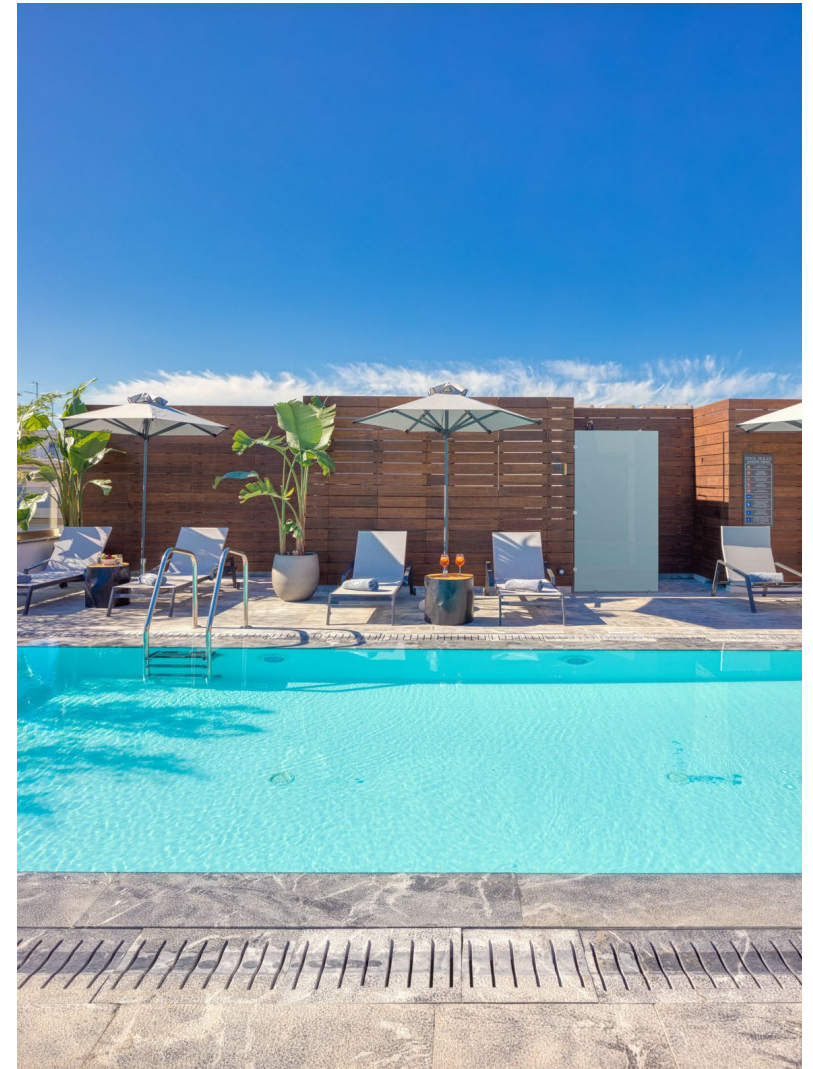
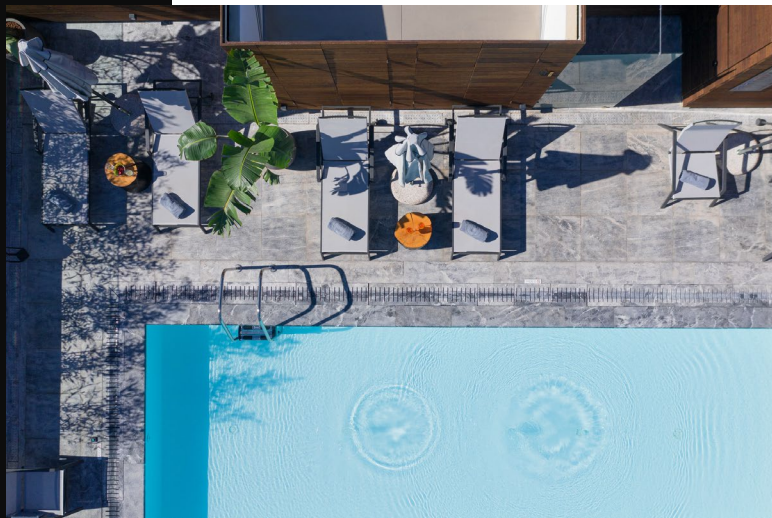


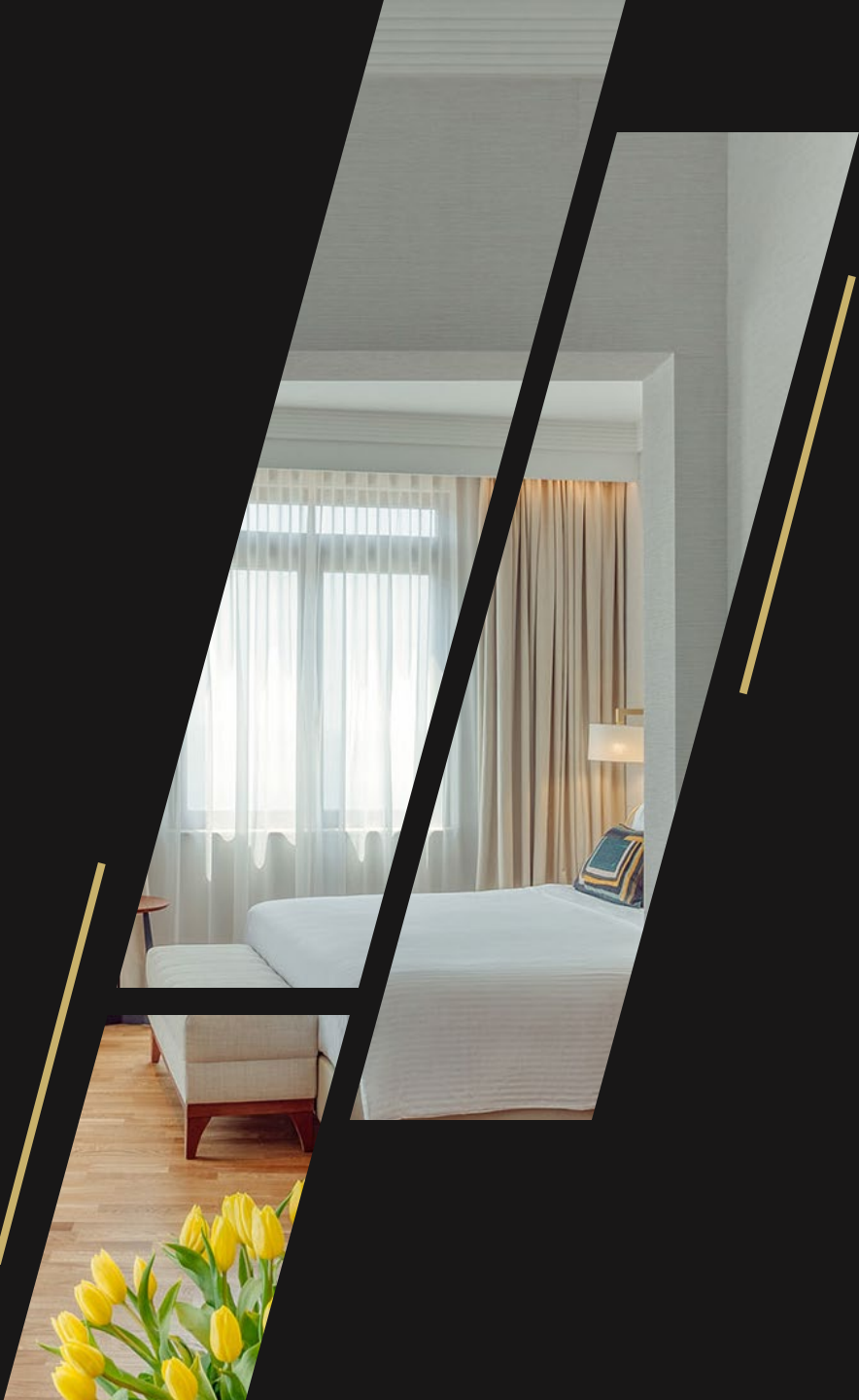


Outdoor Pool

Swim under the Sky

Located on the top floor of the hotel, the Electra Palace Thessaloniki outdoor pool is an oasis with a magnificent view. Open throughout the summer, surrounded by comfortable sunbeds and serviced by the Orizontes bar and restaurant, it is the ideal spot to relax and catch some sun even if you are here on a business trip, and, of course, to lose yourself in the endless sparkling blues of the summer sea.





Rooms & Amenities

EXPLORE 138 ROOMS

All Rooms and Suites have their own unique aesthetic and style, with smart televisions, fast Wi-fi connections, efficient air conditioning and sound insulation so that you can fully enjoy your stay. Finally, all our bathrooms include complimentary cosmetic products from the world-famous Greek brand, Korres. Most rooms have magnificent views of the Thermaikos Gulf and the iconic landmark of Aristotelous Square, as well as the legendary Olympus Mountain, the house of ancient Greek Gods.

- 61 Classic Rooms 6 Superior Side Sea View Rooms
- 8 Superior Sea View Rooms 18 Premium Side Sea View Rooms
- 25 Premium Sea View Rooms 5 Executive Side Sea View Rooms
- 6 Executive Sea View Rooms 5 Junior Suites 2 Superior Suites
- 2 Executive Suites 10 Family Rooms



ALL ROOMS FEATURE

“



ROOM AMENITIES



Free Wi-Fi / High Speed



Air Conditioning /
Individually Controlled



Soundproof Windows



Flat Screen Smart TV / Satellite



Closet



Electronic Safe



Direct Dial Telephone /
Wake-up call



Writing Desk



Coffee / Tea
making facilities



Mini-Bar



Hairdryer



Magnifying Mirror
in the bathrooms



Towels



Bathrobes & Slippers

MORE

Daily Maid Service - Room Service (24h) - Turn Down Service /
Marble Bathroom - Bath Amenities / Movie & Sport Channels / Razor Plug



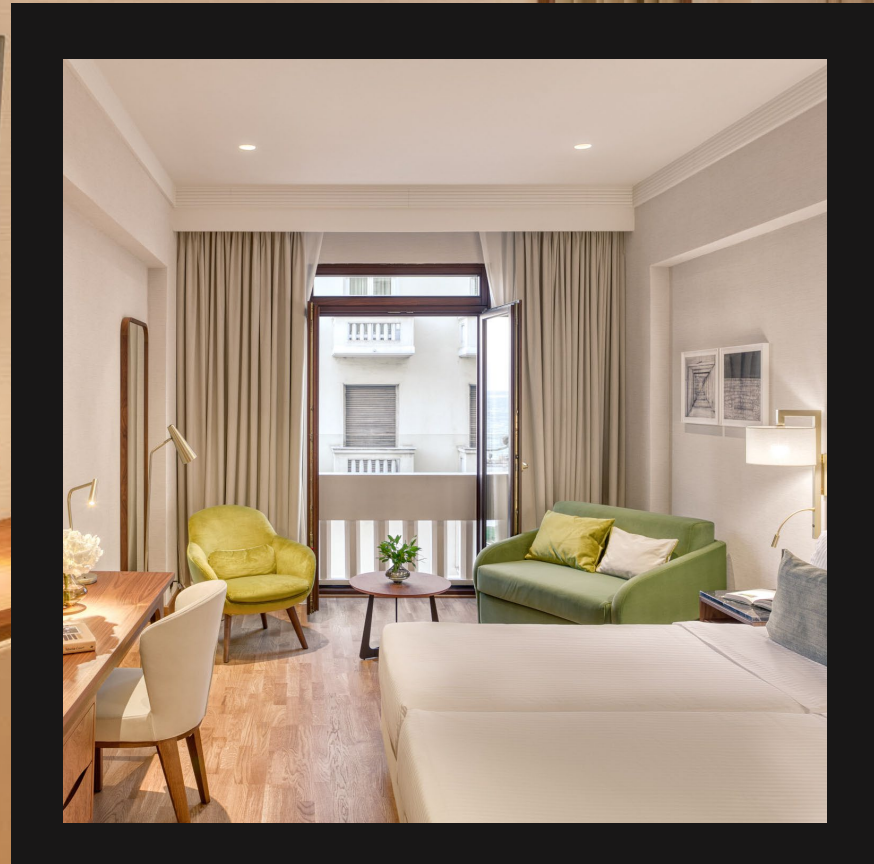
61 Classic

-17-31 m² / 1-3 Persons

The white linens, parquet floors, the marble bathrooms and an extraordinary attention to every detail set the stage for an ideal stay. Created in earthy shades that complement a relaxed, calm and soothing atmosphere with a strong design signature.

ROOMS





6 Superior Side Sea View

~25-30 m² / 1-3 Persons

The rooms are offering scenic views to the city and partial to the sea and Aristotelous Square.

The elegant interiors, natural colors and luxurious amenities include walk-in showers or marble bathrooms, bespoke furniture and premium bedding, providing guests with a unique experience.

These rooms can be found on the 2nd floor of the hotel and have a strong design signature complemented with the vibe of the city's center, that guests can enjoy through the french window.

ROOMS





8 Superior Sea View

~25-31 m² / 1-3 Persons

The rooms are dominated by natural colors, while beautiful french windows flood the room with the bright light of the North, offering magnificent view of the sea.

The elegant interiors and luxurious amenities include marble bathrooms, walk-in showers, bespoke furniture and premium bedding, providing guests with a most welcoming experience.

These rooms can be found on the 2nd floor of the hotel and have a strong design signature complemented with the vibe of the city's center.

ROOMS





18 Premium Side Sea View

~20-29 m² / 1-3 Persons

A feast of modern classics is distributed throughout these rooms that can be found on the 3rd, 4th and 5th floor of the hotel.

Crisp white linens, natural ambient colors and a strong design signature complemented with the iconic curved-shaped balconies that offer partial sea and city views, these rooms are the perfect choice for a truly chic stay.

ROOMS





25 Premium Sea View

~21-31 m² / 1-3 Persons

The rooms can be found on the 3rd, 4th and 5th floor of the hotel and have a stunning view to the sea front and Aristotelous Square.

Modern with a classic feast with a strong design signature and curved shaped balconies these rooms are the perfect choice for an unforgettable stay.

Guests can enjoy the view of Thermaic Gulf by sitting in their balcony.

ROOMS



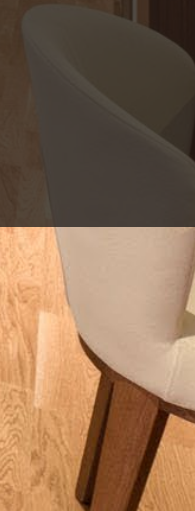
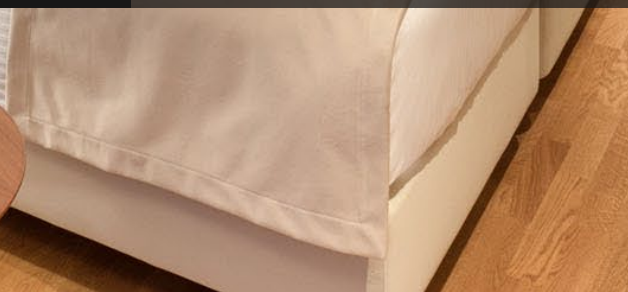


5 Executive Side Sea View

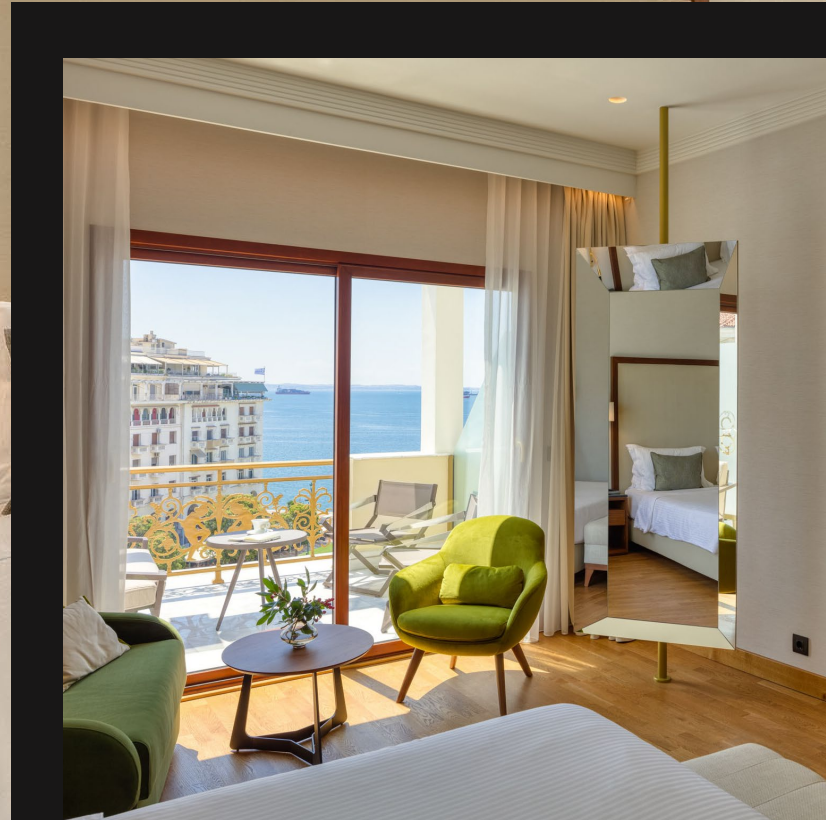
~24-26 m² / Max. 2 Persons

These spacious rooms can be found on 6th floor. Luxurious and comfort rooms with an extra large curved balcony with striking views over the city and the sea.

ROOMS







6 Executive Sea View

~30-32 m² / Max. 3 Persons

These luxurious and spacious rooms can be found on the famous 6th floor of the hotel. An obsessive attention to each and every detail, the finest luxuries and comforts and a strong modern identity breathe life to a result that wouldn't be out of place in the pages of interior design magazines.

The absolute highlight is of course the extra-large curved balcony with the magnificent panoramic views inspired by the Byzantine era, complemented with the bright blue of the sea.

ROOMS





5 Junior Suites

~32-44 m² / Max. 3 Persons

The Junior Suites sit on the corners of the emblematic building, and rank among the best choices available for an indulging stay at the center of Thessaloniki's hippest neighborhood.

The Junior Suites are dressed in sombre shades of natural colors and with their elegant carpets, bespoke furniture and eclectic details evoke the atmosphere of a relaxing luxurious hub with a strong design twist.

With premium bedding, stunning amenities and a sitting area perfectly attuned to the hotel's strong modern design nuances. All Suites come with magnificent views, while a few also open-up to a seductive curved balcony.

SUITES





2 Superior Suites

~44 m² / Max. 3 Persons

Two super sophisticated Superior Suites have been created with an extraordinary attention to detail for an elegant stay at the middle of the city.

These Suites comprise a small entrance hall, a spacious living room with extraordinary views and an equally generous bedroom.

The Superior Suites are decorated in an attractive style that combines both references to timeless classics and contemporary twists, while the rich palette of natural colors does the decorative talking.

Flooring in warmly hued woods, marble bathrooms, furniture by well-known designers and the magnificent views of the beautiful curved balconies set the stage for a superior experience with amazing sea view.

SUITES





2 Executive Suites

~50-65 m² / Max. 3 Persons

Our two Executive Suites constitute the quintessence of luxury lodging and can be found on our renowned 6th floor.

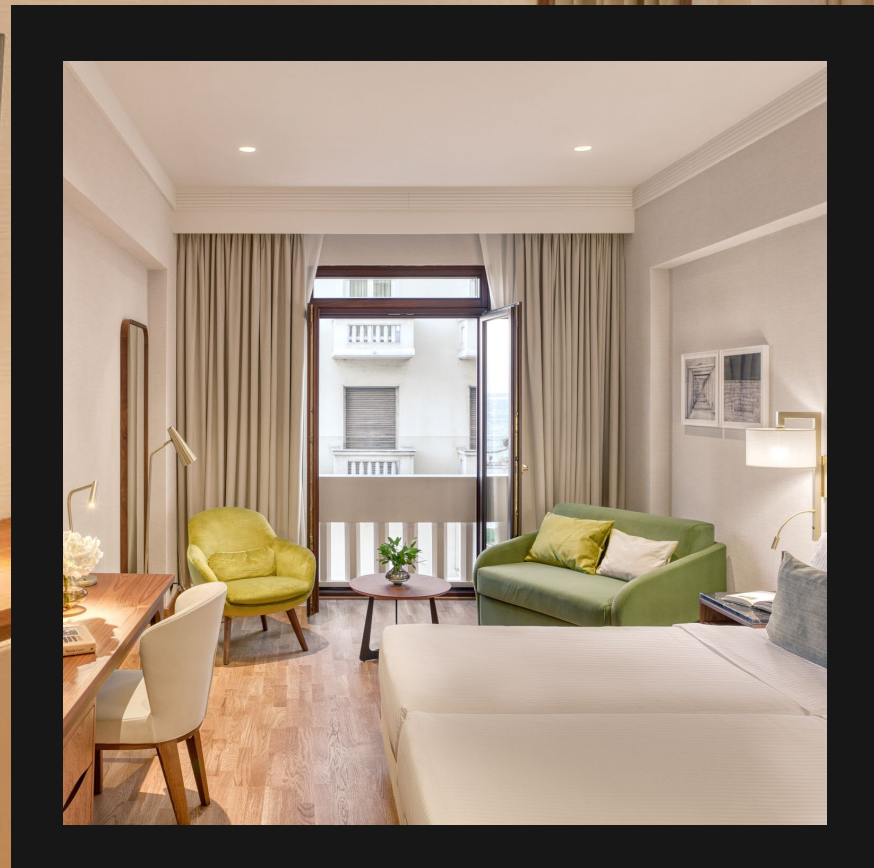
These extra spacious Suites feature highly distinctive furniture, beautiful parquet floors, crisp linens and the absolute finest in terms of luxuries and comforts.

Complemented by a separate living room and dining area, they open up to their own extra large balconies with superlative view to the Aristotelous square and the Thermaikos gulf.

They are an all-time celebrity favorite, and most certainly rank among the most photographed hotel rooms in Greek hospitality history.

SUITES





10 Family Rooms

~43-60 m² / Max. 5 Persons

Comfortable and well equipped, the family room consists of a Superior, Premium or Executive side sea view room and a Classic double or twin room.

This room features views of the Thessaloniki city center's vibrant streets. Some also with balconies, they include all the amenities necessary for an enjoyable stay, including armchairs, Wi-Fi internet access and laptop safes, whether you are in town for business or for a longer or shorter vacation.

ROOMS



EXPLORE NEARBY AREA

City Experiences



THESSALONIKI

Rich in history, culture and beauty, Thessaloniki is one of those destinations that once you visit, you will keep returning to. Fascinating museums, endless monuments from all historical periods, an intricate culinary scene, a vibrant nightlife and an amazing promenade along the sea all make this city easy to fall in love with. And the Electra Palace Thessaloniki is in the center of them all! To the northwest of the hotel, a few blocks away, the famous Ladadika neighborhood, in all their 19th century restored glory, is brimming with taverns, restaurants, bars and live music venues.



WHITE TOWER OF THESSALONIKI



ROTUNDA CIRCULAR ROMAN TEMPLE



ARCH OF GALERIUS



ARISTOTELOUS SQUARE



THE GREAT ALEXANDER MONUMENT



THE UMBRELLAS NEW PARALIA THESSALONIKI



Meetings & Events

EXPLORE

6 different conference rooms each with its own style, can host meetings or events with furniture and equipment that can be arranged in any way (in a semi-circle, a circle, a horseshoe shape etc). All of them are fully equipped with audiovisual equipment and a fast Wi-Fi connection.

- Makedonia I
- Makedonia II
- Byzantio I
- Byzantio II
- Olympiada
- Foyer



Specifications of Rooms

Name	Day-light	Fully A/C	WiFi	Area		Dimensions Lenth x Width		Height	
				sqm	sqft	m	ft	m	ft
MAKEDONIA I	✓	✓	✓	84	904	10,60 x 7,20	34,77 x 23,62	2,80	9,18
MAKEDONIA II	✓	✓	✓	113	1216	11,50 x 6,50	37,72 x 21,32	2,80	9,18
MAKEDONIA	✓	✓	✓	197	2120	14,00 x 12,00	45,93 x 39,37	2,70	8,85
BYZANTIO I	✓	✓	✓	68	731	9,60 x 6,70	31,49 x 21,98	2,70	8,85
BYZANTIO II	✓	✓	✓	80	861	9,40 x 8,50	30,83 x 27,88	2,70	8,85
BYZANTIO	✓	✓	✓	148	1593	9,60 x 15,00	31,49 x 49,21	2,80	9,18
OLYMPIADA	✓	✓	✓	46	495	7,50 x 5,93	24,60 x 19,45	2,80	9,18
FOYER	✓	✓	✓	195	2098	19,50 x 9,15	63,97 x 30,01	2,80	9,18

Capacity of Rooms

Name							
	Theatre	Boardroom	Reception Cocktail	Hollow Square	Classroom	U-Shape	Banquet
MAKEDONIA I	70	20	60	36	40	30	60
MAKEDONIA II	95	28	70	36	44	30	70
MAKEDONIA	216	36	150	62	96	49	148
BYZANTIO I	40	20	40	30	30	24	40
BYZANTIO II	50	22	50	34	36	28	50
BYZANTIO	150	28	120	46	72	40	120
OLYMPIADA	35	14	40	18	18	15	30
FOYER	-	-	120	-	-	-	120







ELECTRA PALACE
• THESSALONIKI •

Contact Details

9, Aristotelous Sq., 546 24 Thessaloniki, Greece

T: (+30) 2310 294 000

E: infoskg@electrahotels.gr

www.electrahotels.com